

Project Status Report

Overall Status: **On Track**

Project Name: OWASP CRSFGuard 3.1

Jan 23, 2011 - Jul 24, 2014

Contributions to master, excluding merge commits

Contributions: **Commits**

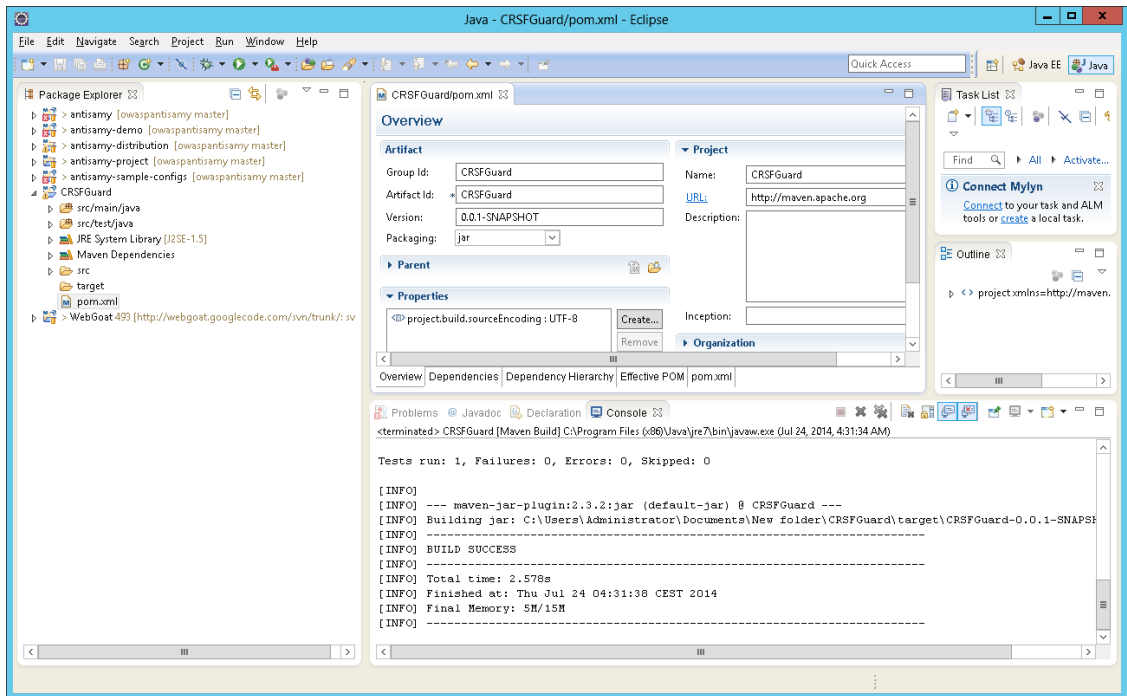


July 23, 2014

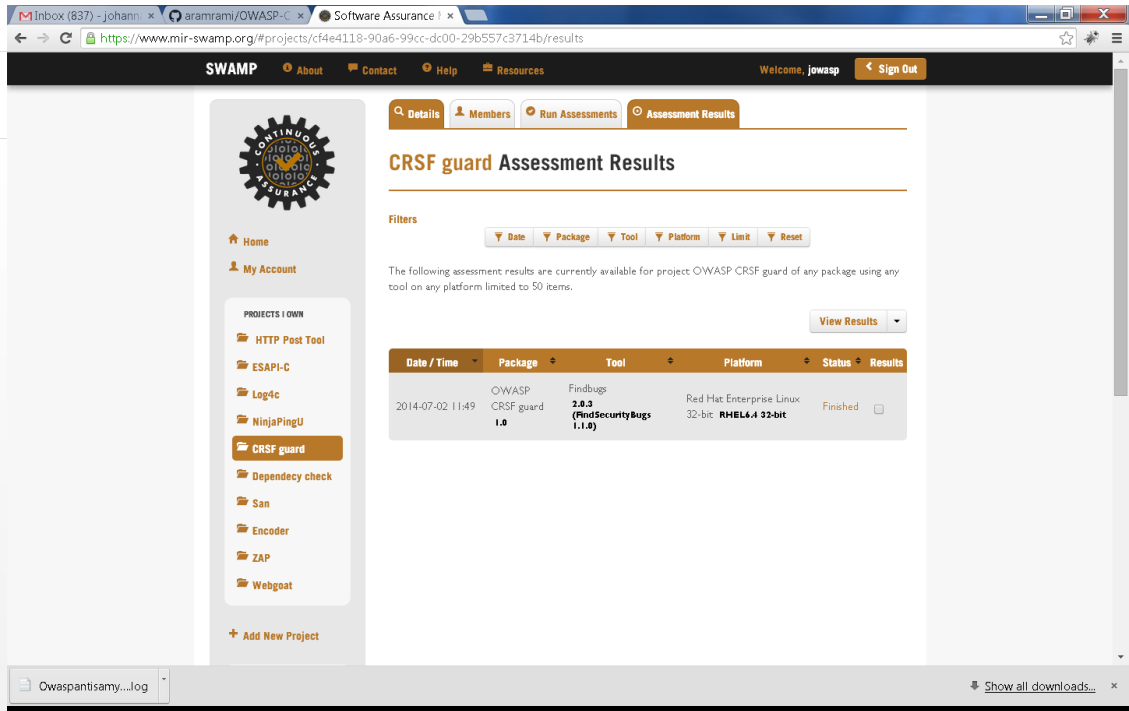
Status Code Legend

- On Track: Project is on development
- High Risk: At risk, with a high risk of going off track
- Warning: potential issues
- Off Track: Date will be missed if action not taken

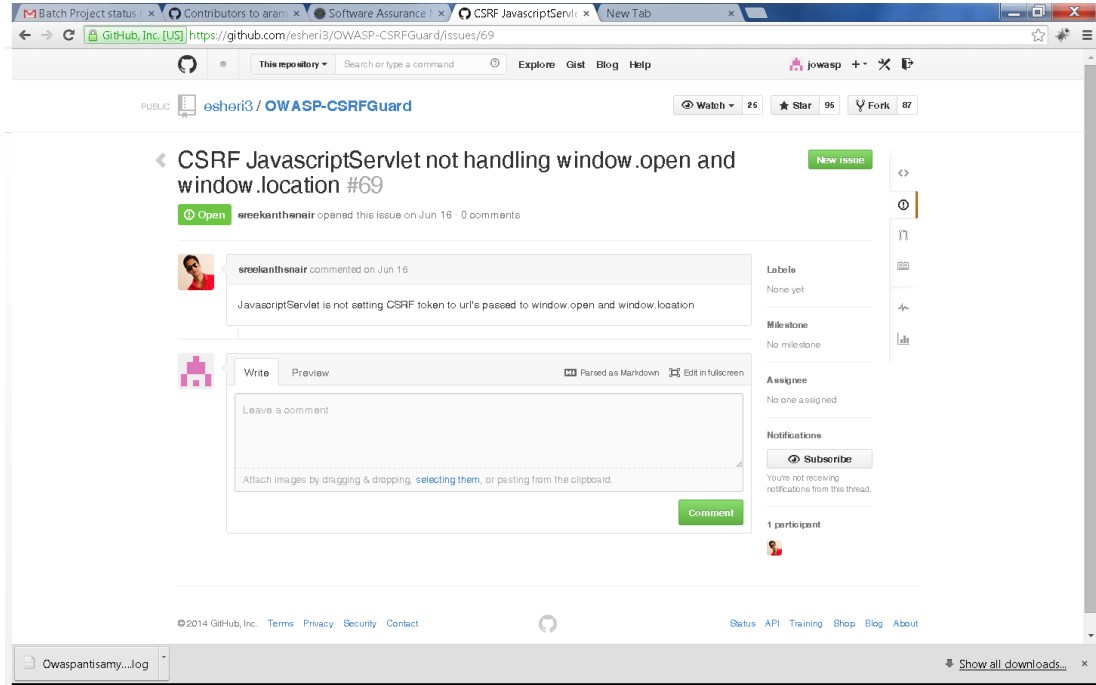
| | |
|--|---|
| Does the project meet the Health criteria?: Partially | <ul style="list-style-type: none">● It has a complete description about the project● It has a friendly license: http://creativecommons.org/licenses/by-sa/3.0/● Vendor neutral● It has an updated user manual : https://www.owasp.org/index.php/CSRFGuard_3_User_Manual● It has a mailing list● It has an active leader working on new features and development |
| Issues: | <ul style="list-style-type: none">● New version does not have an issue available for users |
| Does the project meet the quality criteria?: Mostly | <ul style="list-style-type: none">● New source code repository available: https://github.com/aramrami/OWASP-CSRFGuard● Project builds successfully (Through Eclipse IDE) & SWAMP● Excellent documentation on how to build the project● Has 19 contributors● 141 commits |



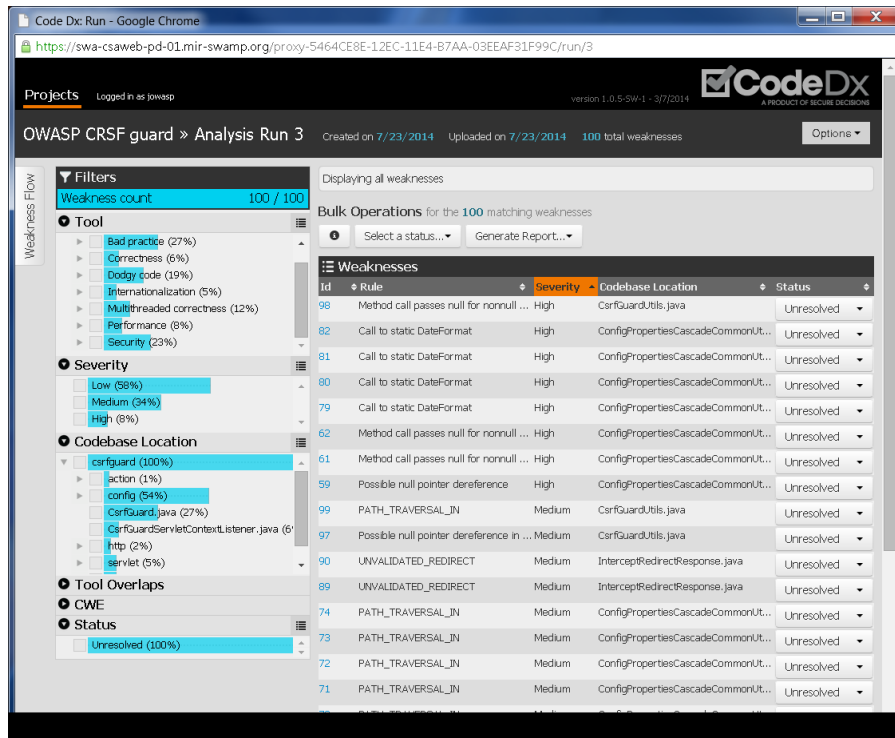
Builds smoothly on SWAMP



- There is an old version still available in Github, this can be confusing for new users: [git://github.com/esheri3/OWASP-CSRFGuard.git](https://github.com/esheri3/OWASP-CSRFGuard.git)
- Users are logging issues in old wiki: <https://github.com/esheri3/OWASP-CSRFGuard/issues/69>



- Some Security issues that must be fixed or at least mentioned to users so they are aware



| | |
|--|--|
| | |
|--|--|

Project Abstract

Project has a healthy level of development and activity. This is a project that was has been revived by Azzedine Ramrami. In this new development cycle, there is no bug wiki available for users or new adapters. Another issue concerning this is that users are logging issues in the old wiki, which can be very confusing for new and old ones.

Project leaders should provide a clear roadmap and information clean up to avoid actual issues. Due to the lack of support at this development stage, we cannot consider this project a LAB status until these issues are resolved.

We strongly encourage the project leader to create a wiki for issues and clarify the information regarding the old and new version of CRSF. As a library of defense, it is essential that security bugs are also mentioned in the wiki as release issues. If these issues are cleared, the project can become a LAB.